

* Technical data and features subject to change without notice

Pumping unit technical data

		HP16o6H	HP18o8ECX
Max. theoretical output	m ³ /h	160	180
Max. pressure on concrete	bar	53	83
Concrete cylinders (diam. x stroke)	mm	230 x 2100	260 x 2100
Concrete hopper capacity	l	550	600
Hydraulic circuit		open	closed

Super compact machine mounted on 10x4 6050* wheelbase trucks for excellent manoeuvrability.

Contained stabilisation dimensions for easy placement in all types of job sites.

Control System with pumping unit HP1808ECX

Smartronic Silver

Integrated color LCD	Diagnostics
Counters	Capsense rear panel
Pumping unit management	

ASC in standard equipment



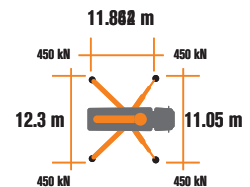
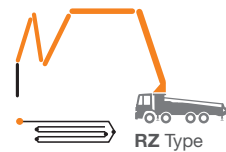
The automatic continuous verification of the center of gravity of the machine guarantees the maximum safety of boom movement and the maximum possible coverage of the job area, even with partial opening of the stabilization.



MBE
Maximum boom extension control



Automatic RPM Management



Placing boom technical data

		Model B5R RZ 61/56
Pipeline diameter	mm	125
Max. vertical reach	m	60.1
Max. horizontal distance (from the centre of the axis of rotation)	m	55.1
Net horizontal reach	m	50.5
Min. unfolding height	m	13.8
Section numbers		5
1st section opening angle		90°
2rd, 3rd section opening angle		180°
4th section opening angle		254°
5th section opening angle		235°
Rotating angle		+/-270°
End hose	m	3

Control System with pumping unit HP1606H

Easystronic Silver

Integrated LCD	Pumping unit management
Counters	Diagnostics



Lsc Safe boom operation is guaranteed when two, three or four outriggers are fully opened.



Automatic RPM Management

STEELTECH Series

K61L



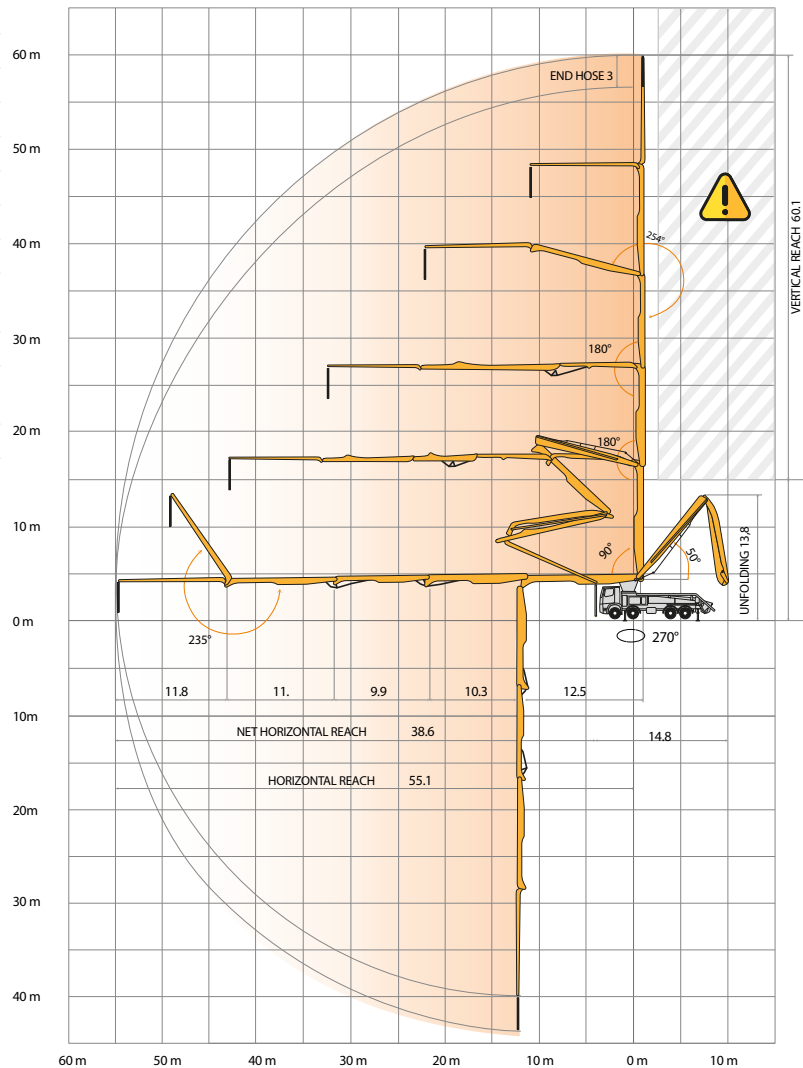
Standard equipment

- Front "X" style diagonal outriggers with triple telescopic opening and swing-out rear outriggers
- Driven by PTO or gear box
- Boom control by means of "Load Sensing" proportional distributor
- Safety device upon opening of concrete discharge door and hopper grille
- Emergency device for pumping group
- 2 Hetricon proportional radio controls with 3 manipulators
- Emergency radio control cable 20 m
- Plastic water tank with 600-litre capacity
- Medium pressure water pump (50 l/min - 50 bar)
- LED lights for stabilisation and hopper lighting
- Double layer piping with chromium carbide inserts on the entire piping line
- Washing accessories
- High resistance of the components most subject to wear ("S" valve, wear plate, compensating ring)
- Declaration of conformity supplied with the user and maintenance manual

Main options

- Smartronic Gold (Smartronic Silver + ASC Advanced Stability Control)
- Smartronic Advanced: In addition to the Smartronic Gold functions, provides ASC2.0 stability control, ABC boom oscillation control (Antibouncing), automatic boom opening and closing. Includes radioremove control Hetricon or HBC with display**
- Easytronic Gold (Easytronic Silver + LSC Light Stability Control)
- Automatic boom opening and closing
- Centralized boom lubrication system
- Concrete shut-off valve
- High pressure water pump (15 l/min - 150 bar)
- Radio remote control: Hetricon or HBC equipped with display
- Straight concrete piping on double layer boom with high wear-resistance chromium carbide inserts CIFA LLT Long Life Top
- Wide choice of customer personalization colours
- *Over 100 options available; details available on truck pumps optional booklet**

Distribution boom B5RRZ 61/56



Advanced Stability Control 2.0



Antibouncing



Boom Automatic Opening and Closing

Smartronic Video



CIFA S.p.A. / Via Stati Uniti d'America, 26 / 20030 SENAGO (MI) / ITALY
Tel. +39 02 990 131 / sales@cifa.com



cifa.com

K61L_ENG_0623