

* Technical data and features subject to change without notice

Pumping unit technical data

| | | HP16o6H | HP16o8EC | HP18o8ECX |
|-------------------------------------|-------------------|------------|------------|------------|
| Max. theoretical output | m ³ /h | 160 | 160 | 180 |
| Max. pressure on concrete | bar | 53 | 80 | 83 |
| Concrete cylinders (diam. x stroke) | mm | 230 x 2100 | 230 x 2100 | 260 x 2100 |
| Concrete hopper capacity | l | 550 | 550 | 600 |
| Hydraulic circuit | | open | closed | closed |

5 Sections boom with RZ folding.

Super compact machine mounted on 10x4 5750* wheelbase trucks for excellent maneuverability.

Contained stabilisation dimensions for easy placement in all types of job sites.

Control System with pumping unit HP1808ECX

Smartronic Silver

| | |
|-------------------------|---------------------|
| Integrated color LCD | Diagnostics |
| Counters | Capsense rear panel |
| Pumping unit management | |

Optional Smartronic Gold



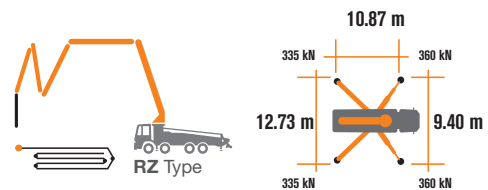
The automatic continuous verification of the center of gravity of the machine guarantees the maximum safety of boom movement and the maximum possible coverage of the job area, even with partial opening of the stabilization.



MBE
Maximum boom extension control



Automatic RPM Management



Control System with pumping unit HP1606H

Easytronic Silver

| | |
|----------------------|-------------------------|
| Integrated color LCD | Pumping unit management |
| Counters | Diagnostics |

Optional Easytronic Gold



LSC Safe boom operation is guaranteed when two, three or four outriggers are fully opened.



Automatic RPM Management

Placing boom technical data

| | | B5RZ 56/51 |
|--|----|------------|
| Pipeline diameter | mm | 125 |
| Max. vertical reach | m | 55.1 |
| Max. horizontal distance (from center of slewing axis) | m | 49.9 |
| Net horizontal reach | m | 45.6 |
| Min. unfolding height | m | 14.4 |
| Sections number | | 5 |
| 1st section opening angle | | 90° |
| 2nd section opening angle | | 180° |
| 3rd section opening angle | | 180° |
| 4th section opening angle | | 254° |
| 5th section opening angle | | 213° |
| Rotating angle | | +/-270° |
| End hose | m | 3 |



STEELTECH Series K56L

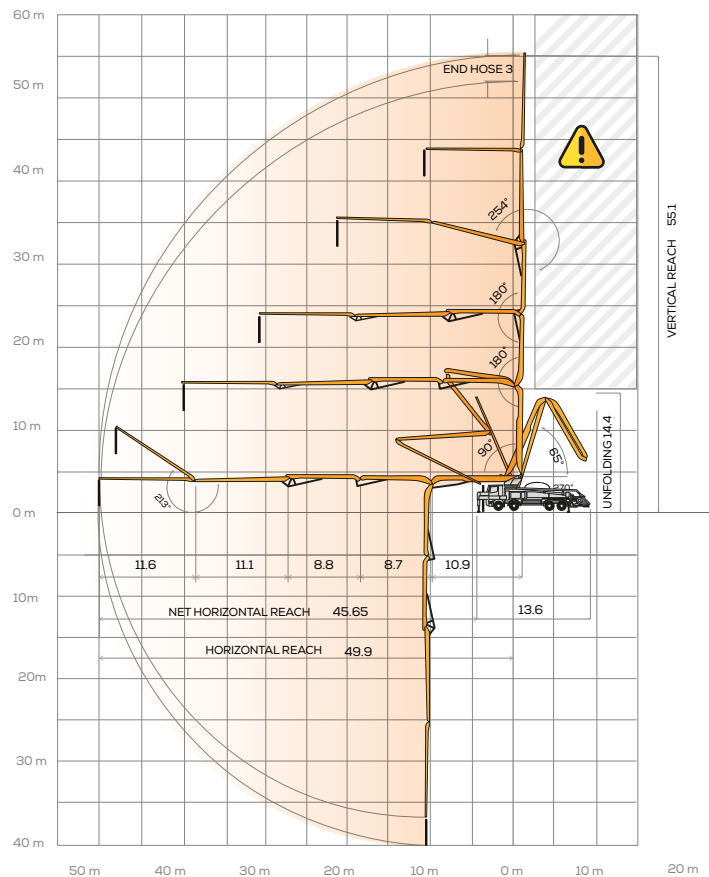
Standard equipment

- Front "X" style diagonal outriggers with double telescopic opening and swing-out rear outriggers for a quick and easy set-up also in narrow areas
- Driven by PTO or gear box
- Boom control by means of "Load Sensing" proportional distributor
- Safety device upon opening of concrete discharge door and hopper grille
- Emergency device for pumping group
- 2 Hetriconic proportional radio controls with 3 manipulators
- Emergency radio control cable 20 m
- Plastic water tank with 600-litre capacity
- Medium pressure water pump (50 l/min - 50 bar)
- LED lights for stabilisation and hopper lighting
- Double layer piping with chromium carbide inserts on the entire piping line
- Washing accessories
- High resistance of the components most subject to wear ("S" valve, wear plate, compensating ring)
- Declaration of conformity supplied with the user and maintenance manual

Main options

- Smartronic Gold (Smartronic Silver + ASC Advanced Stability Control)
- Smartronic Advanced: In addition to the Smartronic Gold functions, provides ASC2.0 stability control, ABC boom oscillation control (Antibouncing), automatic boom opening and closing. Includes radioremove control Hetriconic or HBC with display**
- Easytronic Gold (Easytronic Silver + LSC Light Stability Control)
- Automatic boom opening and closing
- Centralized boom lubrication system
- Concrete shut-off valve
- High pressure water pump 28l / 120 bar
- Radio remote control: Hetriconic or HBC equipped with display
- Straight concrete piping on double layer boom with high wear-resistance chromium carbide inserts CIFA LLT Long Life Top
- Wide choice of customer personalization colours
- *Over 100 options available; details available on truck pumps optional booklet

Distribution boom B5RZ 56/51



Optional Smartronic Advanced



**Advanced
Stability Control
2.0**



Antibouncing



**Boom Automatic
Opening and Closing**

Smartronic Video



CIFA S.p.A. / Via Stati Uniti d'America, 26 / 20030 SENAGO (MI) / ITALY
Tel. +39 02 990 131 / sales@cifa.com

