

\* Technical data and features subject to change without notice

### Pumping unit technical data

		HP16o8EC
Max. theoretical output	m <sup>3</sup> /h	160
Max. pressure on concrete	bar	80
Maximum number of cycles per min.		31
Concrete cylinders (diam. x stroke)	mm	230 x 2100
Concrete hopper capacity	l	550
Hydraulic circuit		closed

### Standard machine management

#### Smartronic gold

ASC Advanced Stability Control

MBE Maximum boom extension control

LCD monitor

RPM automatic management

Pumping unit management

Advanced diagnostic

Rear capsense control panel

#### ASC is standard equipment



The automatic continuous verification of the center of gravity of the machine guarantees the maximum safety of boom movement and the maximum possible coverage of the job area, even with partial opening of the stabilization.



**MBE**  
Maximum  
boom extension  
control

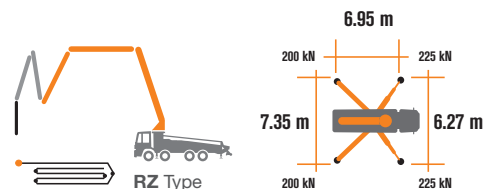


**Automatic RPM**  
Management

Total weight less than 26 tons, payload to the user always available.

Super compact machine mounted on 8x4 4500\* wheelbase trucks for excellent maneuverability.

Contained stabilization dimensions for easy placement in all types of job sites.



### Placing boom technical data

		B5RZ 40/36
Pipeline diameter	mm	125
Max. vertical reach	m	39,1
Max. horizontal distance (from center of slewing axis)	m	34,5
Net horizontal reach	m	32,1
Min. unfolding height	m	8,6
Sections number		5
1st section opening angle		90°
2nd section opening angle		180°
3rd section opening angle		180°
4th section opening angle		236°
5th section opening angle		223°
Rotating angle		+/-270°
End hose	m	3

CARBOTECH Series

# K40H



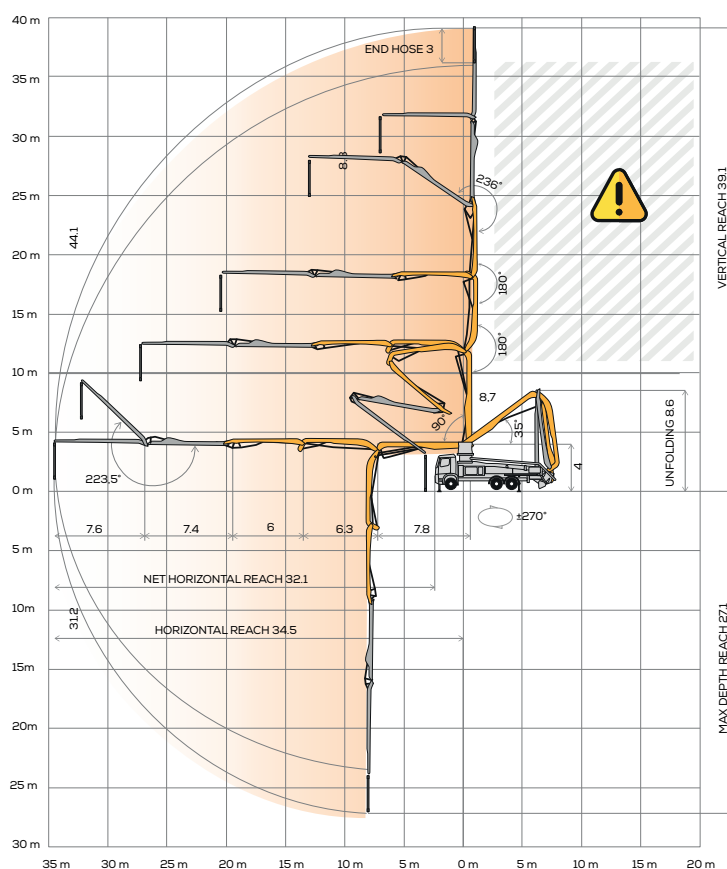
## Standard Equipment

- Section I, II and III made of high strength steel
- Section IV, V made of light in carbon fiber
- Front "X" style diagonal outriggers with double telescopic opening and swing-out rear outriggers for a quick and easy set-up also in narrow areas
- Driven by PTO or gear box
- Boom control by means of "Load Sensing" proportional distributor
- Safety device upon opening of concrete discharge door and hopper grille
- Emergency device for pumping group
- 2 Hetronic proportional radio controls with 3 manipulators
- Emergency radio control cable 20 m
- Plastic water tank with 600-litre capacity
- Medium pressure water pump (50 l/min - 50 bar)
- LED lights for stabilisation and hopper lighting
- Double layer piping with chromium carbide inserts on the entire piping line
- Washing accessories
- High resistance of the components most subject to wear ("S" valve, wear plate, compensating ring)
- Declaration of conformity supplied with the user and maintenance manual

## Main Options

- Smartronic Advanced:** In addition to the Smartronic Gold functions, provides ASC2.0 stability control, ABC boom oscillation control (Antibouncing), automatic boom opening and closing. Includes radioremote control Hetronic or HBC with display
- ASC Advanced stability control
- Automatic boom opening and closing
- Centralized boom lubrication system
- Concrete shut-off valve
- High pressure water pump (15l/min - 150 bar)
- Radio remote control: Hetronic or HBC equipped with display
- Straight concrete piping on double layer boom with high wear-resistance chromium carbide inserts CIFA LLT Long Life Top
- Wide choice of customer personalization colours
- \*Over 100 options available; details available on truck pumps optional booklet**

Distribution boom B5RZ 40/36



**Advanced Stability Control 2.0**



**Antibouncing**



**Boom Automatic Opening and Closing**

Carbon Fiber Video



Smartronic Video



CIFA S.p.A. / Via Stati Uniti d'America, 26 / 20030 SENAGO (MI) / ITALY  
Tel. +39 02 990 131 / sales@cifa.com



cifa.com

