

MK28E

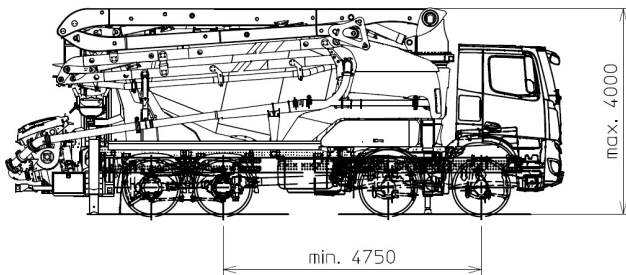
Hybrid plug-in truck mixer pump

TRUCK-MIXER PUMP "MAGNUM"

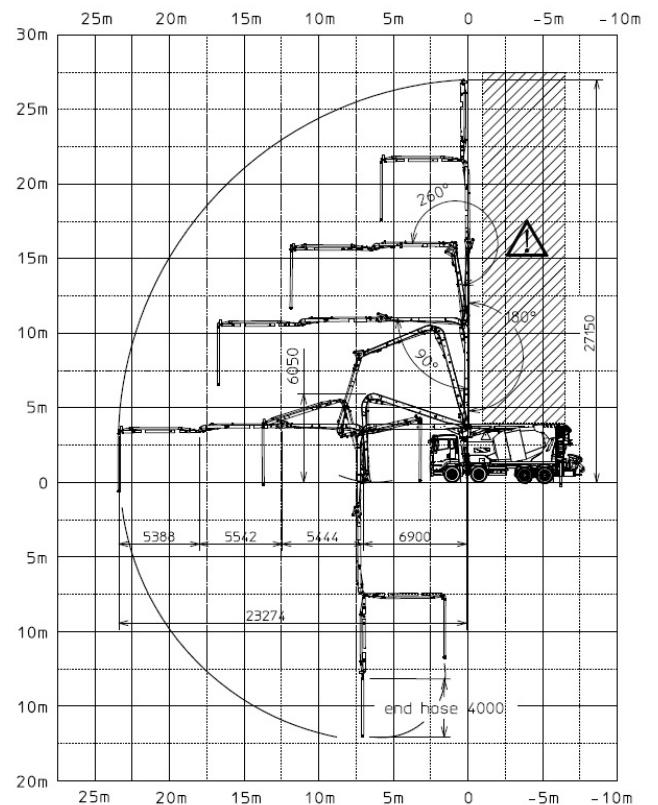
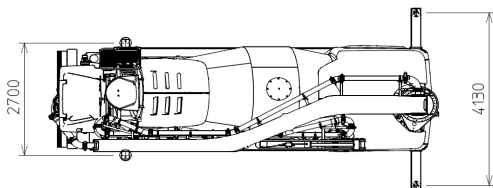
Placing Boom	MK28H
Pumping Unit	PB607EPC
Concrete Mixer	RH80
Driven by	PTO-Accoppiatore
Chassis	4 axles



Dimensions



Dimensions varying according to truck assembly



MK28E

Hybrid plug-in truck mixer pump

Product description

ENERGYA is the new CIFA plug-in Hybrid truck pump mixer adopting the latest technologies to decrease fuel consumption, pollution and noise. The system allows the full energy management in all working conditions and the choice and the set up of components maximize the general efficiency of the system. Conventional hydraulic system is replaced by electric transmission with high efficiency. The system allows to rotate the drum, the boom, the stabilization, the pumpin unit with diesel engine off, without exhaust emission and with very low noise in the working area during the charging and discharging phases. Emission and noise reduction make ENERGYA very useful in all areas where high respect for the environment is the first choice.

Standard equipment

- Placing boom MK28E, 4 sections, pipeline diameter 100 mm, "Z" folding system
- 3rd and 4th boom sections made of light and resistant CIFA CARBOTECH composite material
- Chassis at extremely high torsion absorption, calculated according to Finite Elemental Methods (FEM)
- Great loading capacity drum with elliptic bottom, in high wear resistant steel of 450 HB (3mm)
- 600 Pressurized water tank
- Aluminum hose/pipe holder on both sides with polymer rear mono-axle mudguards with rubber mudflaps
- Boom control by proportional distributor
- One proportional radio remote control Hetronic with display with 20 mt cable
- One proportional radio remote control Hetronic without display with 20 mt cable
- Vibrator on the concrete hopper grid with remote control
- Centralized lubrication system for pumping unit
- Oil automatic lubrication system for pumping pistons
- Additional manual lubrication system for pumping unit
- LED lights for pumping unit hopper
- Accessories for cleaning and washing
- Automatic adjustment feeler of truck-mixer discharge into hopper
- Concrete pipes on the frame in double thickness with crome carbide inserts in high wear resistant CIFA Long Life Hard LLH
- Concrete pipes on the boom in double thickness with crome carbide inserts in high wear resistant CIFA Long Life Hard LLN
- Long life wear plate and cutting ring with hard carbide inserts
- Hopper cover and style carterure in fiberglass

Electro-hydraulic functions

Drum rotation
Stabilization
Boom opening / closing
Pumping phase
Services

Control system

- Smartronic:
 - LSC Light stability control
 - LCD monitor
 - Drum data
 - Pumping unit data
 - Working hours
 - Diagnostic

Battery

Technology	Lithium-ion
Voltage	288 V
Capacità	36 kWh/125Ah

Charging mode

Standard charging mode	single phase 220V – 16A
High speed charging mode	400Vac (Three phase) – 35kW

Concrete Mixer Technical data

Model		RH 80
Nominal capacity	m ³	7
Drum geometric volume	m ³	12,8
Filling ratio	%	55
Max. drum speed	r.p.m.	14
Pressurized water tank capacity	l	600
Liter-counter scale	l	0-500

Pumping unit technical data

Model		PB607EPC
Max. theoretical output	m ³ /h	61
Max. pressure on concrete	bar	71
Max. number of cycles per minute	n°	32
Concrete cylinders (diam. x stroke)	mm	200x1000
Concrete hopper capacity	l	400
"S" valve diameter	"	7

Placing boom technical data

Model		MK28H
Pipeline diameter	mm	100
Max. vertical reach	m	27,150
Max. horizontal distance	m	23,274
Section numbers		4
1st section opening angle		90°
2nd section opening angle		180°
3rd section opening angle		260°
4th section opening angle		251°
Rotating angle		-240° / +240°
End hose length	m	4

Technical data and characteristics subject to modifications without notice